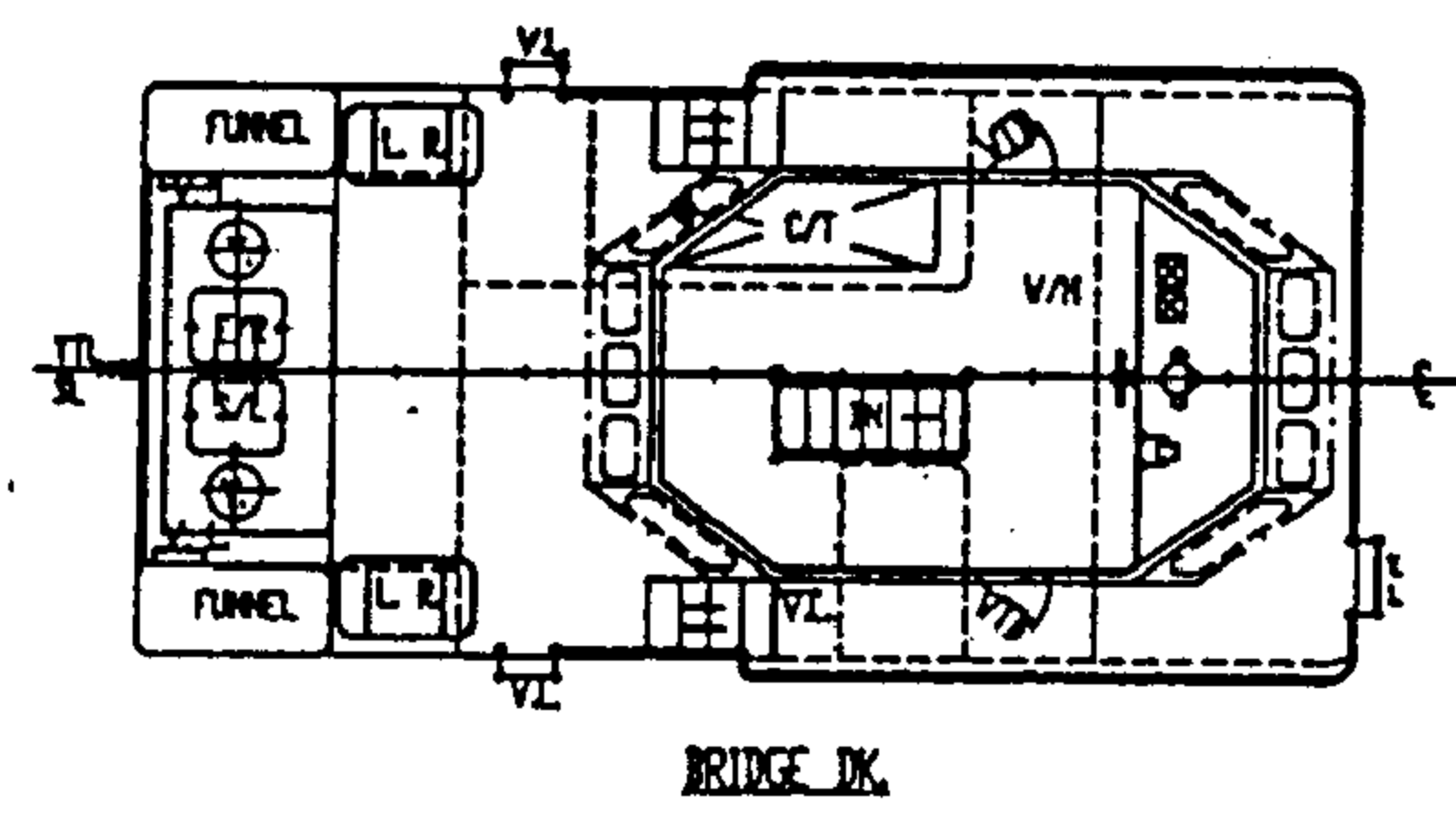


NOTES
 THE FOLLOWING EQUIPMENTS IS TO BE PROVIDED ON BOARD
 (I) BOW ANCHOR ---- 2 X 360 KG
 (II) CHAIN CABLE ---- 247.5 m X 19.0 mm Ø (GRADE I)
 17.6 mm Ø (GRADE II)
 (III) MOORING LINE ---- 3 X 110 m X 49 KN (BREAKING LOAD)
 (IV) TOW LINE ---- 180 m X 100 KN (BREAKING LOAD)
 (V) STREAM ANCHOR ---- 140 KGS X 1 + 1 X 90 m X 98 KN (B.S.)

PRINCIPAL PARTICULAR

L. O. A	24.35 M (79.87 FT)
L. B. P.	22.47 M (73.70 FT)
BEAM MLD	7.32 M (24.00 FT)
DEPTH MLD	3.20 M (10.50 FT)
DESIGNED DRAFT	2.70 M (8.86 FT)
CREW	10 MEN
FUEL OIL	100.00 M ³
FRESH WATER	23.00 M ³
BALLAST	50.00 M ³
MAIN ENGINE	2 X CATERPILLAR 3412C DITA 720 HP / 1800 RPM
GEAR BOX	TVIN DISC MCS20-2 6.10 : 1 RATIO
GENERATOR	2 X 25 KV EACH
SPEED	10 KNOTS (FREE RUNNING)
DESIGNED B. P.	16 TONNES (APPROXIMATE)



NOTES
 (A) ✓ : BHD BETWEEN F.B.T. AND ACC. SP. TO BE COVERED BY OIL-IMPERVIOUS COMPOSITION.
 (B) ✓ : D.K. PLATE BETWEEN F.B.T. AND ACC. SP. TO BE COVERED BY INCOMBUSTIBLE MATERIALS.

DATE	NOTIFICATION	BY
DESIGNER VONG'S SHIPBUILDING CONTRACTOR & DESIGNER NAVAL ARCHITECT		
TEL - 004-320382, 320398 (D), 318375 60, FAX - 004-320398 511 FL. 4C, JONGKING LANE, 960081 SPO L/S NO. MCS 3822, 960091, SIRIL, SARAWAK, MALAYSIA		
SHIP 24M T. S. TUG		
TITLE GENERAL ARRANGEMENT		
OWNER	LINGCO MARINE S/P, J.B.	TR. NO. 3182
CLASS	MC NS 8 (TUG) NS 8	P.O.R. 5708
TRADE	UNRESTRICTED AREA	JOS NO. 1000
IRON	TRACED	DECEDED
SCALE	DRG. NO.	

This drawing and the information contained herein is supplied on the understanding that they are the exclusive property of VONG'S SHIPBUILDING CONTRACTOR & DESIGNER. They must not be used or reproduced in whole or in part without permission in writing.

Specifications

TYPE OF VESSEL	: TWIN SCREW STEEL TUGBOAT (WITH KORT NOZZLE)
CLASSIFICATIONS	: NKK (NS* PUSHER/TUG MNS*)
LENGTH (L.O.A.)	: 24.35m
BREADTH MLD.	: 7.32m
DEPTH MLD.	: 3.20m
DESIGNED DRAFT	: 2.70m
GRT / NRT	: 159 / 48
FUEL OIL TANK CAPACITY	: APPROX. 100m ³
FRESH WATER TANK CAPACITY	: APPROX. 23m ³
MAIN ENGINE	: 2 X CATERPILLAR 3412DITA 720HP @1800RPM
GEAR BOX	: 2 X TWIN DISC MG5202; RATIO 6.10:1
GENERATOR	: 2 X 28kW YANMAR MARINEIZED GENSET
TOWINGHOOK	: 1 X 25 TON WITH MECHANICAL QUICK RELAEASE
WINDLASS	: 1 X ELECTRO-HYDRAULIC WINDLASS, DOUBLE DRUM WITH SPEED @10m/min c/w CHAIN & ANCHORS
STEERING GEAR	: 1 X 2 TON ELECTRO-HYDRAULIC
BILGE & BALLAST, GS & FIRE PUMP	: 2 X Ø2" ITUR PUMP, CAPACITY 18m ³ /hr @25M HEAD
F.O. TRANSFER PUMP	: 1 X Ø1½" GEAR PUMP (CHINA)
FRESH WATER PUMP	: 1 X Ø1" PRESSURE PUMP
OILY WATER SEPARATOR	: 1 X 0.25m ³ /hr
NAVIGATIONAL AIDS	: 1 X VHF 1 X SSB 1 X RADAR 1 X ECHO SOUNDER 1 X GPS 31 1 X Ø6" STANDARD TABLE COMPASS
SPEED (FREE RUNNING)	: APPROX. 11.0 KNOTS
CREW ACCOMMODATION	: 10 MEN
PORT OF REGISTRY	: SINGAPORE
YEAR BUILT	: OCTOBER 2002

NOTE: PARTICULARS GIVEN BELIEVED TO BE CORRECT BUT NOT GUARANTEED.