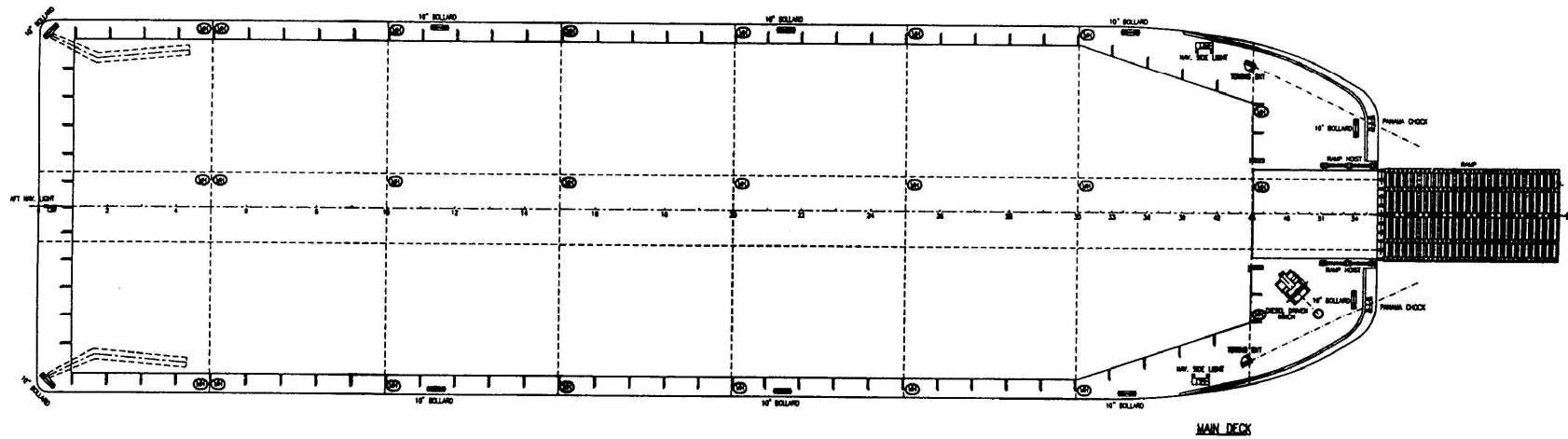
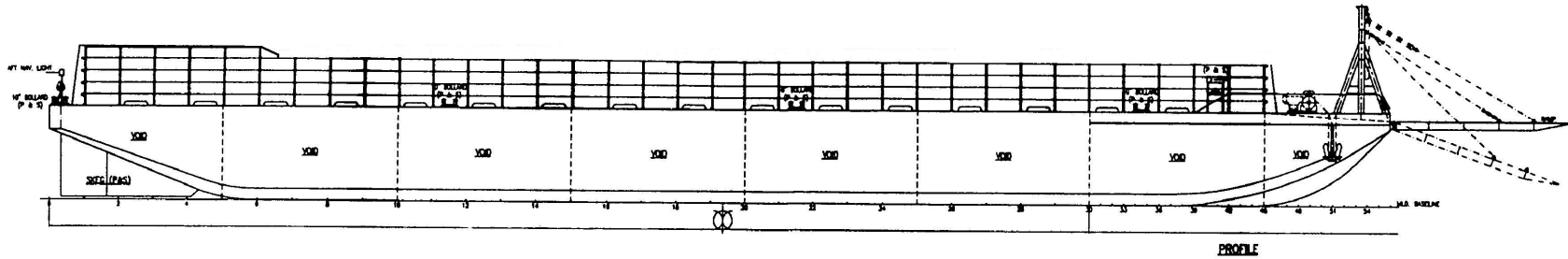


230FT X 64FT X 16FT FLAT-TOP DECK CARGO STEEL DUMB BARGE – BRIEF SPECIFICATIONS



Plating (Deck)	: 12.5mm	Plating (Bottom)	: 12.0mm	Plating (Sides)	: 12.0mm
Plating (L/Bhd)	: 8.0mm	Plating (T/Bhd)	: 8.0mm	Frame (Deck)	: 9.5mm x 600 x 115 FLG
Frame (Bottom)	: 9.5mm x 600 x 115 FLG	Frame (Sides)	: 8.0mm x 408 x 100 FLG	Frame (L/Bhd)	: 8.0mm x 380 x 75 FLG
Longitudinal (Deck)	: 9.0mm x 150 x 90 O.A	Longitudinal (Bottom)	: 7.0mm x 125 x 75 O.A	Longitudinal (Sides)	: 9.0mm x 125 x 75 O.A
Longitudinal (L/Bhd)	: 7.0mm x 100 x 75 O.A	Longitudinal (T/Bhd)	: 7.0mm x 125 x 75 O.A	Pillar	: 200 x 200 x 52kg/m 'I' Beam
Diagonal	: 12.0mm x 150 x 150 O.A	Sideboard	: 8ft High	Aft Sideboard	: 10ft High
Deck Load	: 8.0 Tonnes/m ² UDL	Class	: NKK	Flag	: Singapore

NOTE: DETAILS GIVEN HEREIN ARE BELIEVED TO BE CORRECT BUT WITHOUT GUARANTEE. ERRORS AND OMISSIONS EXCEPTED