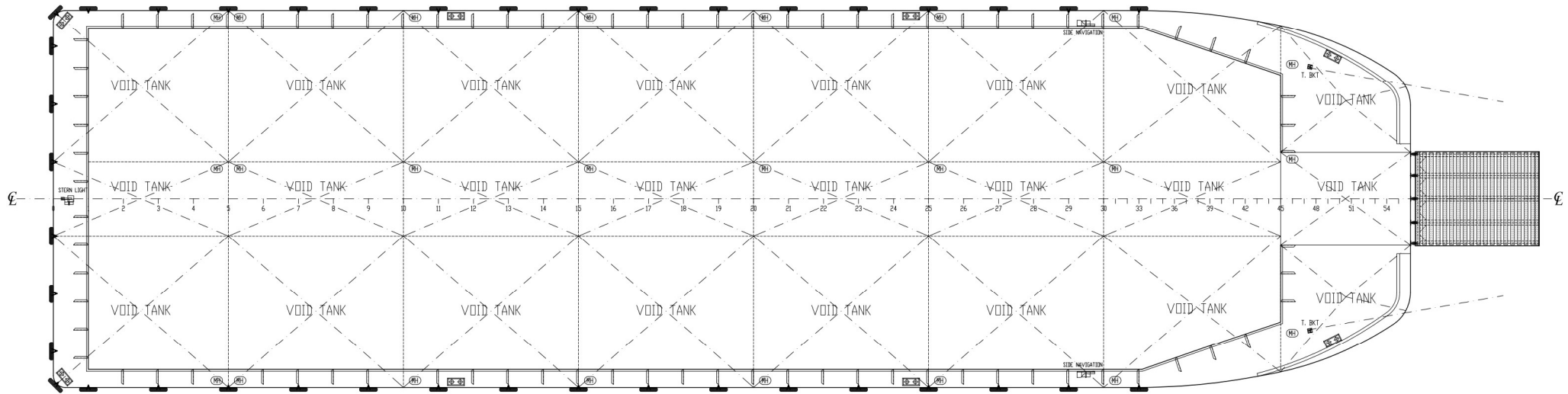


OUTBOARD PROFILE



MAIN DECK PLAN

**PRINCIPAL SCANTLING**

- DECK PLATING : 12.5MM
- BOTTOM PLATING : 12.0MM
- SIDE PLATING : 12.0MM
- DECK LONGL. : 10MM X 125 X 75 O.A.
- BOTTOM LONGL. : 7MM X 125 X 75 O.A.
- SIDE LONGL. : 9MM X 125 X 75 O.A.
- PILLARS : 200 X 200 X 49.9KG/M "T" BEAM
- DIAGONALS : 10MM X 150 X 150 O.A.
- SIDEBOARD : 3 SIDES X 8FT HIGH
- CLASS : N.K.K.
- DECK LOAD : 8 TONS/M2 UDL

MAIN DIMENSIONS :	
LENGTH OVER ALL	: 70.160 Meters
BREADTH MOULDED	: 19.508 Meters
DEPTH MOULDED	: 4.267 Meters

NOTE: DETAILS GIVEN ARE BELIEVED TO BE CORRECT BUT WITHOUT GUARANTEE. E.&OE.

PEMISABLE DECK LOADING 8 TONNES/SQ METERS UDL

ITEM	DETAILS OF MODIFICATION	BY	DATE
BUILDER : PT. BUMI LAUT PERKASA BATAM-INDONESIA			
OWNER :			
PROJECT : 230'X64'X14' DECK CARGO BARGE			
TITLE : GENERAL ARRANGEMENT			
CLASSIFICATION : NKK	HULL NO. 204		REV.
DRAWN : IN-03	CHECKED : BIK	SCALE : 1 : 100	DRAWING NUMBER : BLP-24H2/GA-01B
24 AUG. 2012	24 AUG. 2012		0